



SMD QUARTZ CRYSTAL RESONATOR

石英晶体谐振器



4 Pad Version 12.5×4.6 mm

- Plastic Encapsulated
- ±10 ppm available
- Temperatures to -40°C ~ +85°C
- Reflow soldering temperature: 260°C max
- Tape and Reel (1,000 pcs STD)



RoHS compliant

★ PARAMETERS

技术参数

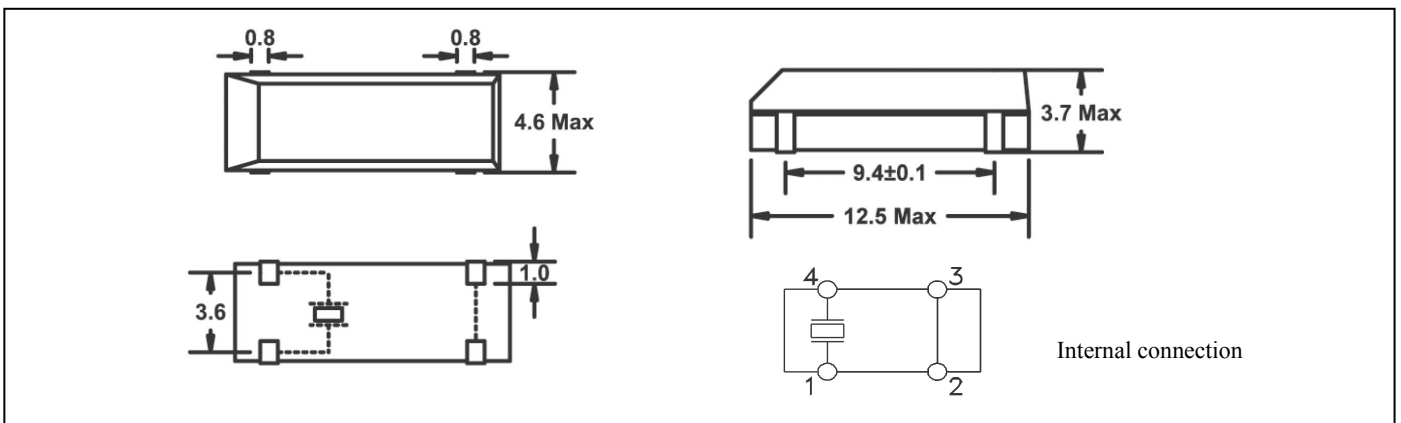
PARAMETERS	参数	SPECIFICATION 规格
Frequency Range	频率范围	3.579~27.000MHz
Loading Capacitance	负载电容	20pF Std. 8 to 33pF Series available
Drive Level	激励电平	100 μ W Max
Frequency Tolerance	频率偏差	±10ppm ~ ±50ppm (at 25°C)
Frequency Stability	频率稳定性	±20ppm ~ ±50ppm
Equivalent Resistance	谐振电阻	50 Ω ~ 200 Ω
Operating Temp. Range:	工作温度范围	-10 ~ +60°C to -40 ~ +85°C
Storage Temp. Range:	储存温度范围	-55 ~ +125°C
Aging (25°C, First Year)	年老化率	±5ppm max

© All specification subject change without notice. 规格变化, 恕不另行通知。

★ ESR (SERIES RESISTANCE RS) 谐振电阻

Frequency (MHz) 频率范围	3.579 ≤ f < 4.000	4.000 ≤ f < 6.000	6.000 ≤ f < 10.000	10.000 ≤ f < 27.000
Equivalent Resistance (MHz) 谐振				

★ DIMENSIONS & LAND PATTERN LAYOUT (Unit: mm) 外形尺寸



★ PART NUMBER GUIDE 部件号示例 e.g. HLX16.000M20SM12-30/50D (*S=HC49/S TYPE)

Logo	Quartz Crystal Resonator 石英晶体谐振器	Frequency 频率 Hz	Load Capacitance 负载电容 pF	Package 盒型	Frequency Tolerance 常温频差 ppm	Frequency Stability 温度频差 ppm	Operating Temp. Range 工作温度
HL	X	16.000M	20	SM12	30	50	D

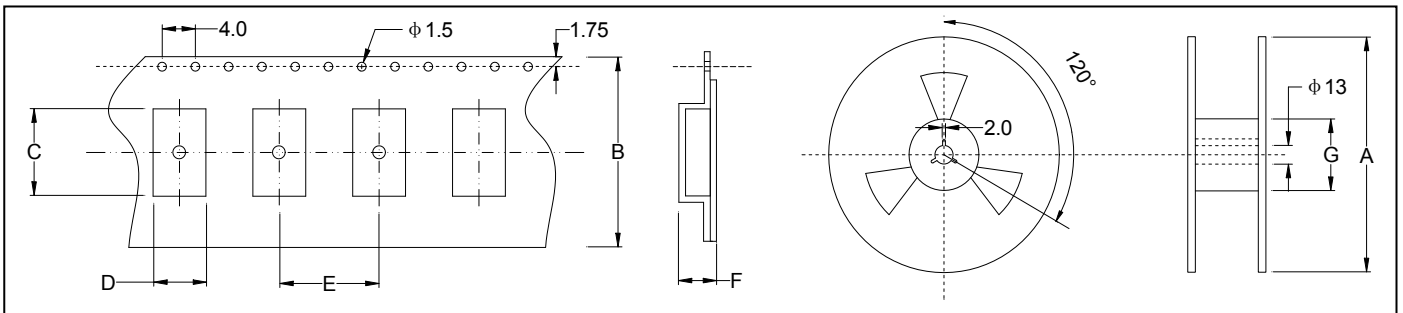
Beijing Hongli Kunpeng International Trade Co., Ltd.

Tel: 86-10-57891098 MP:86-13001179378 Mail: info@hlpint.com or lucyliu0807@163.com



Definition	Description
Operating Temperature Range	A: -10~+60°C
	B: -20~+70°C
	C: -30~+80°C
	D: -40~+85°C
	E: Customer specified

★ TAPING SPECIFICATION (Unit: mm) 编带规格



	A	B	C	D	E	F	G
SMD12.5x4.6	330	24.0±0.3	12.8	5.8	12.0	4.3	100
1000 pcs per reel							

★ REFLOW SOLDERING PROFILE 回流焊特性

