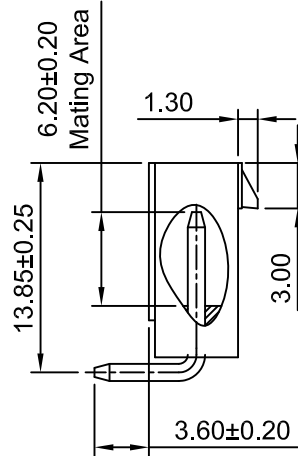
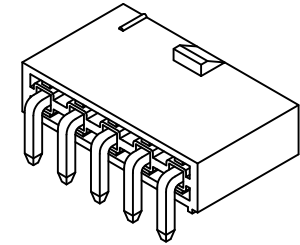


Ordering Information:

C4201WR-XP - ** - ** - **
1 2 3 4

- Part No.
- Material:
(blank): Nylon 66,UL94V-2(Natural)
V0: Nylon 66,UL94V-0(White)
GWT: Nylon 66,UL94V-0(Beige),
IEC 60335-1,5th Edition
Glow Wire Capable.
- Color:
BK: Black
RD: Red
BL: Blue
YL: Yellow
- Finish:
(blank): Tin over Nickel
MT:Matte Tin over Nickel
G:Gold over Nickel(Au:1u")
G3:Gold over Nickel(Au:3u")
G15:Gold over Nickel(Au:15u",Mating Area)
G30:Gold over Nickel(Au:30u",Mating Area)



SPECIFICATIONS:

Current Rating: 13A AC,DC(Max)(Maximum current up to 13A when using the C4201F-TCA-HH series terminal)
Voltage Rating: 600V AC,DC
Temperature Range: -40°C ~ +105°C
Contact Resistance: 10mΩ Max
Insulation Resistance: 1000MΩ Min
Withstanding Voltage: 1500V AC/minute
Pin Material: Brass
Material: Nylon 66,UL94V-2

Ordering Information & Dimensions

Part No.	Dimensions(mm)	
	A	B
C4201WR-2P	4.20	9.80
C4201WR-3P	8.40	14.00
C4201WR-4P	12.60	18.20
C4201WR-5P	16.80	22.40
C4201WR-6P	21.00	26.60

Beijing Hongli Kumpeng International Trade Co., Ltd.

Unit	Scale	Sheet	TITLE
mm	2:1	1 of 1	4.20mm PITCH 90° SINGLE ROW DIP WAFER
DRN	CHK	APVD	
Dengchun Yi	DianKui Wan	Jack Yin	DRAWING NO
General Tolerance			THIRD ANGLE PROJECTION
A1	CHANGE THE DRAWING	2018.03.12	HLB-01-WR-XP 118
A0	NEW RELEASE	2011.05.24	
REV	DESCRIPTION	DATE	

x.x±0.25	
x.xx±0.20	
x.xxx±0.15	
ANGLES ±1°	



REV
A1