

SPECIFICATIONS:

Current Rating: 9A AC,DC
 Voltage Rating: 600V AC,DC
 Temperature Range: -40°C ~ +105°C
 Contact Resistance: 10mΩ Max
 Insulation Resistance: 1000MΩ Min
 Withstanding Voltage: 1500V AC/minute
 Material: Nylon 66,UL94V-2 (Natural)

Ordering Information & Dimensions

Circuits	Dimensions(mm)						
	A	B	C	D	E	F	G
2x1P	N/A	36.00	25.00	13.40	8.70	10.10	5.40
2x2P	4.20	40.20	29.20	17.60	12.90	14.30	9.60
2x3P	8.40	44.40	33.40	21.80	17.10	18.50	13.80
2x4P	12.60	48.60	37.60	26.00	21.30	22.70	18.00
2x5P	16.80	52.80	41.80	30.20	25.50	26.90	22.20
2x6P	21.00	57.00	46.00	34.40	29.70	31.10	26.40
2x7P	25.20	61.20	50.20	38.60	33.90	35.30	30.60
2x8P	29.40	65.40	54.40	42.80	38.10	39.50	34.80
2x9P	33.60	69.60	58.60	47.00	42.30	43.70	39.00
2x10P	37.80	73.80	62.80	51.20	46.50	47.90	43.20
2x11P	42.00	78.00	67.00	55.40	50.70	52.10	47.40
2x12P	46.20	82.20	71.20	59.60	54.90	56.30	51.60
2x18P	71.40	107.40	96.40	81.50	76.78	81.50	76.80

Beijing Hongli Kumpeng International Trade Co., Ltd.

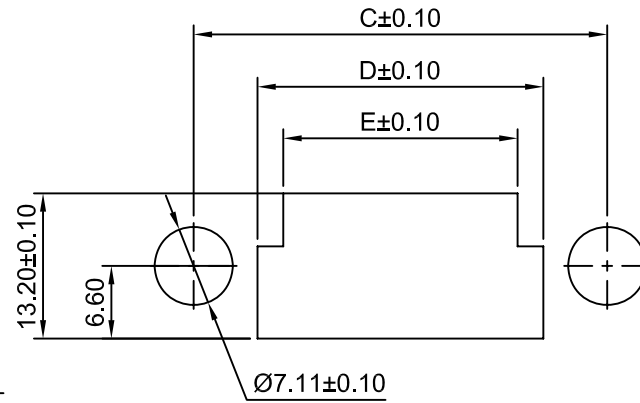
Unit	Scale	Sheet
mm	1.5:1	1 of 1
Draw BY:	Approved :	
Jack Yin	GONGYB	

Title :
**4.20mm PITCH
 DUAL ROW WITH PANEL
 MOUNT EARS HOUSING**

General Tolerance	
A1	ANGLE±
A0	x.xx±0.20
REV	x.xxx±0.15

DRAW NO :
HLB-01-HFA-2xXP 80 REV
 A1

A1	Change the size	2013.06.08
A0	NEW RELEESE	2005.05.10
REV	DESCRIPTION	DATE



Ordering Information:

C4201HFA-2xXP - ** _ **
 1 2 3

1.Part No.

2.Material:

(blank):Nylon 66 UL94V-2

V0:Nylon 66 UL94V-0

GWT:Nylon 66 UL94V-0,GWT 750°C

3.Color:

(blank):Natural

WH:White

BK:Black

RD:Red

YL:Yellow

BL:Blue

