

Ordering Information:

C3030HFB-2xXP - ***
1 2

1.Part NO.

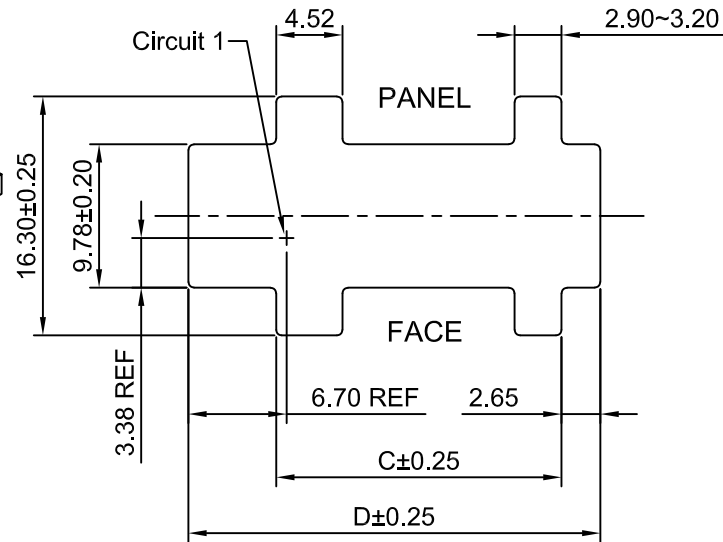
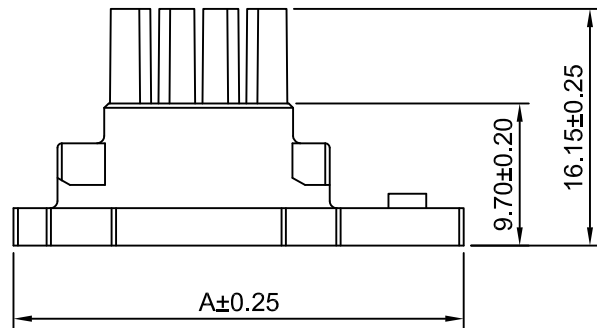
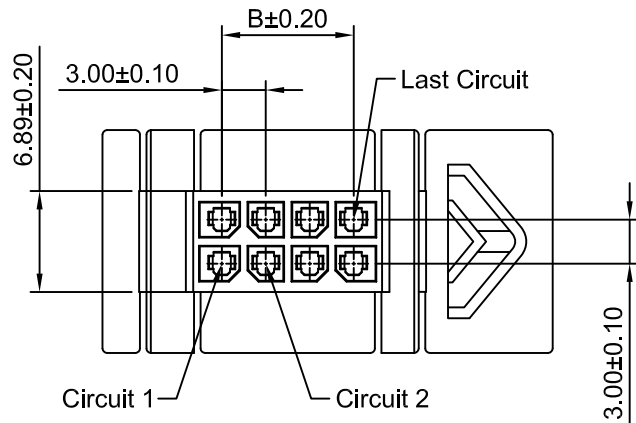
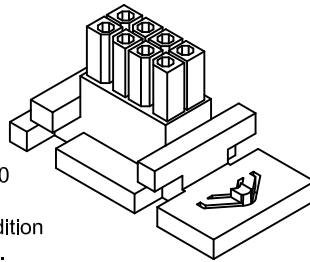
2.Material:

(blank): Nylon 66,UL94V-0

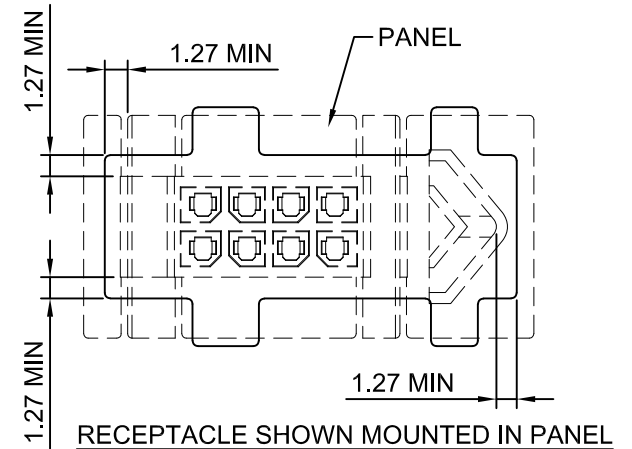
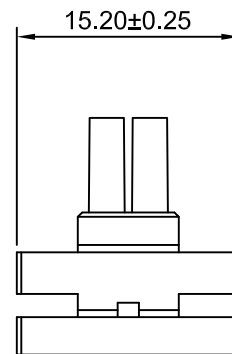
GWT: Nylon 66,UL94V-0,

IEC 60335-1,5th Edition

Glow Wire Capable.



PANEL OPENING
RECOMMENDED PANEL THICKNESS
1.57/1.27



SPECIFICATIONS:

Current Rating: 12.5A AC,DC (AWG #18)

Voltage Rating: 600V AC,DC

Temperature Range: -40°C ~ +105°C

Contact Resistance: 10mΩ Max

Insulation Resistance: 1000MΩ Min

Withstanding Voltage: 1500V AC/minute

Material: Nylon 66,UL94V-0(Black)

Ordering Information & Dimensions

| Part NO. | Dimensions(mm) | | | |
|----------------|----------------|-------|-------|-------|
| | A | B | C | D |
| C3030HFB-2x2P | 24.70 | 3.00 | 13.46 | 22.10 |
| C3030HFB-2x3P | 27.70 | 6.00 | 16.46 | 25.10 |
| C3030HFB-2x4P | 30.70 | 9.00 | 19.46 | 28.10 |
| C3030HFB-2x5P | 33.70 | 12.00 | 22.46 | 31.10 |
| C3030HFB-2x6P | 36.70 | 15.00 | 25.46 | 34.10 |
| C3030HFB-2x7P | 39.70 | 18.00 | 28.46 | 37.10 |
| C3030HFB-2x8P | 42.70 | 21.00 | 31.46 | 40.10 |
| C3030HFB-2x9P | 45.70 | 24.00 | 34.46 | 43.10 |
| C3030HFB-2x10P | 48.70 | 27.00 | 37.46 | 46.10 |
| C3030HFB-2x11P | 51.70 | 30.00 | 40.46 | 49.10 |
| C3030HFB-2x12P | 54.70 | 33.00 | 43.46 | 52.10 |

Beijing Hongli Kumpeng International Trade Co., Ltd.

| Unit | Scale | Sheet | TITLE |
|--------------------|------------------------|----------|-----------------------------------|
| mm | 1:1 | 1 of 1 | 3.00mm PITCH DUAL ROW HOUSING |
| DRWN | CHK'D | APPR | |
| Xu Lei | Diankui Wan | Jack Yin | DRAWING NO. HLB-30-HFB-2xXP 46 |
| General Tolerances | THIRD ANGLE PROJECTION | | |
| x.x±0.25 | | | REV |
| x.xx±0.20 | | | A3 |
| x.xxx±0.15 | | | |
| ANGLES ±1° | | | |

| REV | DESCRIPTION | DATE |
|-----|---------------------------|------------|
| A3 | CHANGE THE DRAWING | 2022.01.14 |
| A2 | CHANGE THE DRAWING | 2020.10.30 |
| A1 | CHANGE THE CURRENT RATING | 2018.12.14 |
| A0 | NEW RELEASE | 2009.05.10 |