

| REV | DESCRIPTION | DATE |
|-----|---------------------------|------------|
| A0 | NEW RELEASE | 2009.05.10 |
| A1 | CHANGE THE CURRENT RATING | 2018.12.14 |
| A2 | CHANGE THE DRAWING | 2020.11.11 |
| A3 | UPDATED DRAWINGS | 2021.03.09 |
| A4 | CHANGE THE DRAWING | 2022.01.14 |

Ordering Information:

C3030HMA-2xXP - **
1 2

1.Part NO.

2.Material:

(Blank): Nylon 66,UL94V-0

GWT: Nylon 66,UL94V-0,

IEC 60335-1,5th Edition

Glow Wire Capable.

SPECIFICATIONS:

Current Rating: 12.5A AC,DC (MAX)

Voltage Rating: 600V AC,DC

Temperature Range: -40°C ~ +105°C

Contact Resistance: 10mΩ Max

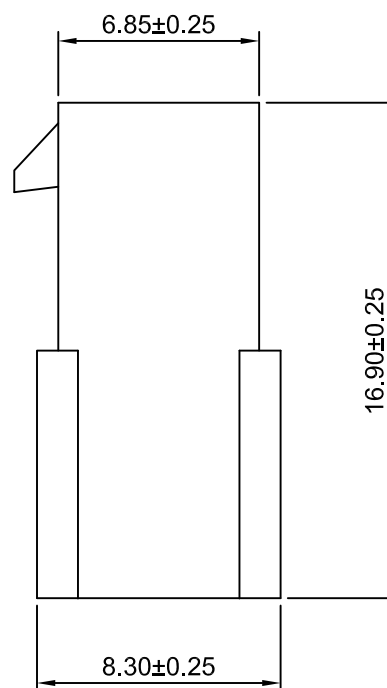
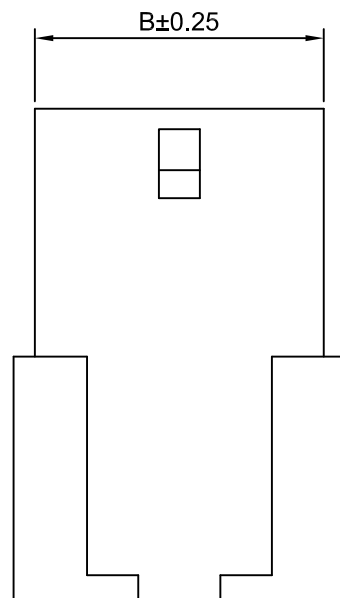
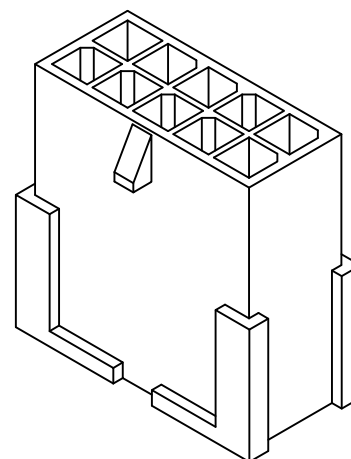
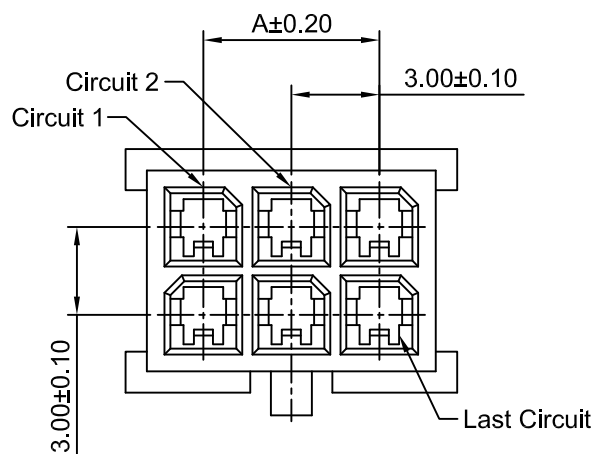
Insulation Resistance: 1000MΩ Min

Withstanding Voltage: 1500V AC/minute

Material: Nylon 66,UL94V-0 (Black)

Ordering Information & Dimensions

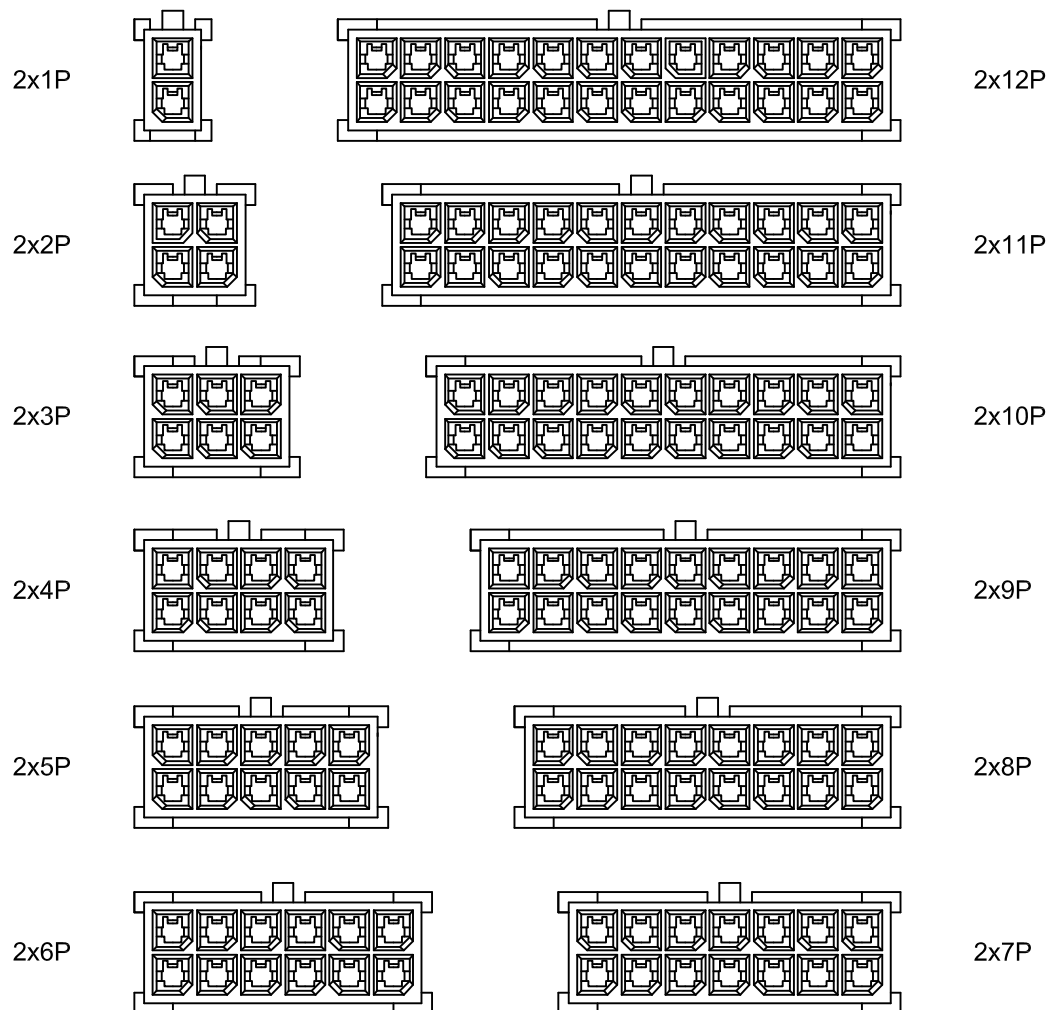
| Part NO. | Dimensions(mm) | |
|----------------|----------------|-------|
| | A | B |
| C3030HMA-2x1P | --- | 3.85 |
| C3030HMA-2x2P | 3.00 | 6.85 |
| C3030HMA-2x3P | 6.00 | 9.85 |
| C3030HMA-2x4P | 9.00 | 12.85 |
| C3030HMA-2x5P | 12.00 | 15.85 |
| C3030HMA-2x6P | 15.00 | 18.85 |
| C3030HMA-2x7P | 18.00 | 21.85 |
| C3030HMA-2x8P | 21.00 | 24.85 |
| C3030HMA-2x9P | 24.00 | 27.85 |
| C3030HMA-2x10P | 27.00 | 30.85 |
| C3030HMA-2x11P | 30.00 | 33.85 |
| C3030HMA-2x12P | 33.00 | 36.85 |



Beijing Hongli Kungpeng International Trade Co., Ltd.

| Unit | Scale | Sheet | TITLE |
|---|-------------|----------|----------------------------------|
| mm | 2:1 | 1 of 2 | 3.00mm PITCH DUAL ROW HOUSING |
| DRWN | CHK'D | APPR | |
| Xu Lei | Diankui Wan | Jack Yin | DRAWING NO. |
| General Tolerances x.x±0.25 x.xx±0.20 x.xxx±0.15 ANGLES ±1° | | | THIRD ANGLE PROJECTION |
| | | | HLB-30-HMA-2xXP 39 |
| | | | REV A4 |

| REV | DESCRIPTION | DATE |
|-----|---------------------------|------------|
| A0 | NEW RELEASE | 2009.05.10 |
| A1 | CHANGE THE CURRENT RATING | 2018.12.14 |
| A2 | CHANGE THE DRAWING | 2020.11.11 |
| A3 | UPDATED DRAWINGS | 2021.03.09 |
| A4 | CHANGE THE DRAWING | 2022.01.14 |



CIRCUIT SIZE LAYOUT(2:1)

Beijing Hongli Kungpeng International Trade Co., Ltd.

| | | | |
|---|------------------------|----------|----------------------------------|
| Unit | Scale | Sheet | TITLE |
| mm | 2:1 | 2 of 2 | 3.00mm PITCH DUAL ROW HOUSING |
| DRWN | CHK'D | APPR | |
| Xu Lei | Diankui Wan | Jack Yin | DRAWING NO. |
| General Tolerances | THIRD ANGLE PROJECTION | | REV |
| x.x±0.25 x.xx±0.20 x.xxx±0.15 ANGLES ±1° | | | HLB-30-HMA-2xXP 39 |
| | | | A4 |