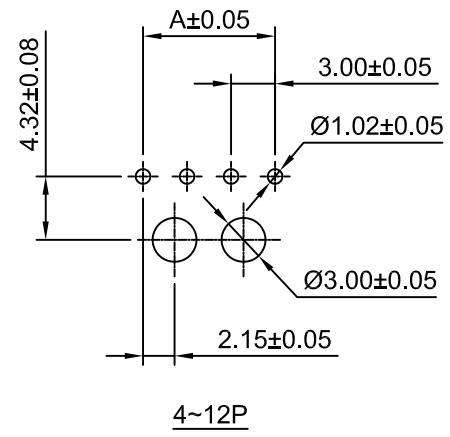
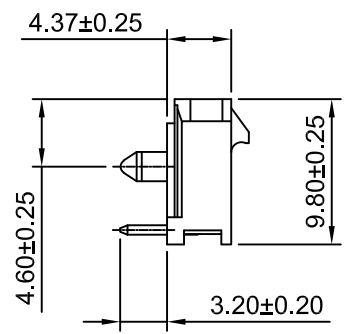
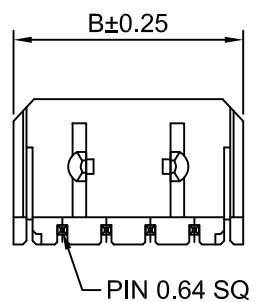


P.C.B LAYOUT

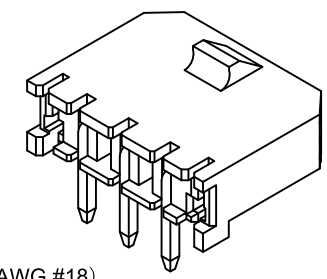


P.C.B LAYOUT

Ordering Information:

C3030WR-XP - ** - **
1 2 3

- Part No.
- Material:
(blank):Nylon 66 UL94V-0
LCP:LCP UL94V-0
GWT:Nylon 66 UL94V-0,GWT 750°C
- Finish:
(blank):Tin over Nickel
G:Gold over Nickel(1"U)
G3:Gold over Nickel(3"U)
G15:Gold over Nickel(15"U)
G30:Gold over Nickel(30"U)



SPECIFICATIONS:

- Current Rating: 12.5A AC,DC (AWG #18)
- Voltage Rating: 600V AC,DC
- Temperature Range: -40°C ~ +105°C
- Contact Resistance: 10mΩ Max
- Insulation Resistance: 1000MΩ Min
- Withstanding Voltage: 1500V AC/minute
- Pin Material:Brass/Tin over Nickel
- Material: Nylon 66,UL94V-0(Black)

Ordering Information & Dimensions

Circuits	Dimensions(mm)		Circuits	Dimensions(mm)	
	A	B		A	B
2P	3.00	9.65	8P	21.00	27.65
3P	6.00	12.65	9P	24.00	30.65
4P	9.00	15.65	10P	27.00	33.65
5P	12.00	18.65	11P	30.00	36.65
6P	15.00	21.65	12P	33.00	39.65
7P	18.00	24.65			

Beijing Hongli Kunpeng International Trade Co., Ltd.

REV	DESCRIPTION	DATE
A4	CHANGE THE DRAWING	2022.01.15
A3	CHANGE THE DRAWING	2021.02.01
A2	CHANGE THE VOLTAGE RATING	2019.11.12
A1	CHANGE THE Current Rating	2018.12.17
A0	NEW RELEASE	2009.05.10

Unit	Scale	Sheet
mm	2:1	1 of 1

TITLE	DRAWING NO.	REV
3.00mm PITCH RIGHT-ANGLE SINGLE ROW WAFER	HLB-30-WR-XP 14	A4

General Tolerances
x.xx±0.25
x.xxx±0.20
x.xxxx±0.15
ANGLES ±1°