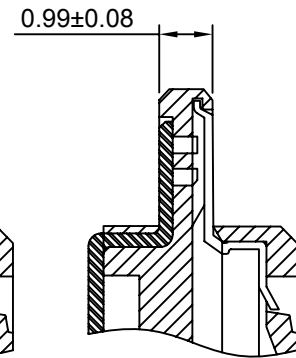


SECTION A-A
SCALE 2:1
Without Terminal



SECTION A-A
SCALE 2:1
With Terminal

Specifications :

- Voltage rating: 200V AC / DC
- Current rating: 0.8A AC / DC
- Withstanding voltage: 500V AC/minute
- Temperature range: -40°C~+80°C
- Insulation resistance: ≥100MΩ
- Contact resistance: ≤50mΩ
- After environmental testing: ≤80mΩ
- Pin Material: Brass/Tin-plated
- Material: Nylon 46, UL94V-0(Black)

Ordering Information & Dimensions

Circuits	Dimensions(mm)				
	A	B	C	D	E
41P	20.00	31.50	27.60	36.00	19.00
51P	25.00	36.50	32.60	41.00	24.00

Beijing Hongli Kumpeng International Trade Co., Ltd.

Unit	Scale	Sheet
mm	2.5:1	1 of 1

Title :

0.50mm PITCH

Draw BY:	Approved :
Jack Yin	GONGYB

HOUSING

General Tolerance

			x.xx≤0.25	ANGLE±
A0	NEW RELEASE	2011.05.10	x.xxx≤0.20	
REV	DESCRIPTION	DATE	x.xxxx≤0.15	

DRAW NO : HLB-01-H-XP 3

REV
A0