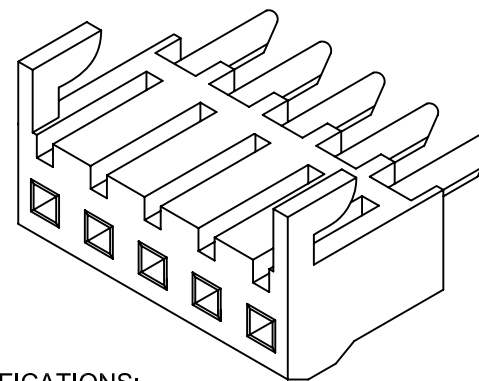
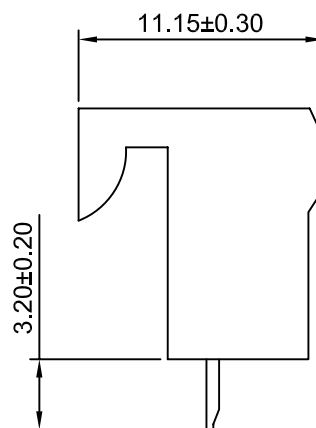


Ø1.52±0.05
P.C.B LAYOUT



SPECIFICATIONS:

Current Rating: 7A AC,DC
 Voltage Rating: 250V AC,DC
 Temperature Range: -40°C ~ +105°C
 Contact Resistance: 10mΩ Max.
 Insulation Resistance: 1000MΩ Min.
 Withstanding Voltage: 1000V AC/minute
 Material:Nylon 66,UL94V-0 (White)

Ordering Information & Dimensions

Circuits	Dimensions(mm)		Circuits	Dimensions(mm)	
	A	B		A	B
2P	3.96	8.06	10P	35.64	39.74
3P	7.92	12.02	11P	39.60	43.70
4P	11.88	15.98	12P	43.56	47.66
5P	15.84	19.94	13P	47.52	51.62
6P	19.80	23.90	14P	51.48	55.58
7P	23.76	27.86	15P	55.44	59.54
8P	27.72	31.82	16P	59.40	63.50
9P	31.68	35.78			

Beijing Hongli Kumpeng International Trade Co., Ltd.

Unit	Scale	Sheet
mm	3:1	1 of 1
Draw BY:	Approved :	
Jack Yin	GONGYB	

Title :
**3.96mm PITCH
 BOTTOM
 ENTRY HOUSING**

DRAW NO : HLB-61-CW-XP 3 REV A2

REV	DESCRIPTION	DATE	General Tolerance	ANGLE±
A2	Change the drawings	2017.04.10	x.xs±0.25 x.xxx±0.20 x.xxxx±0.15	
A1	CHANGE THE SIZE	2014.04.30		
A0	NEW RELELEASE	2013.11.28		