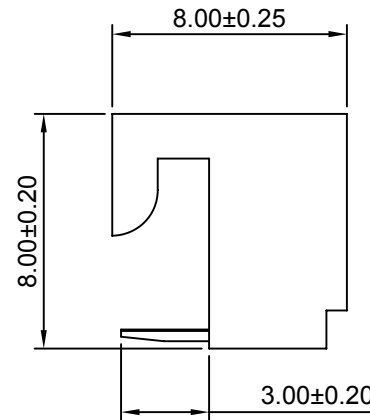
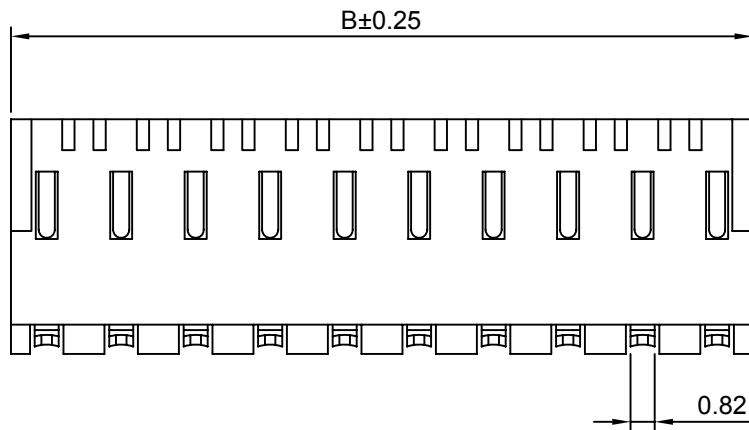
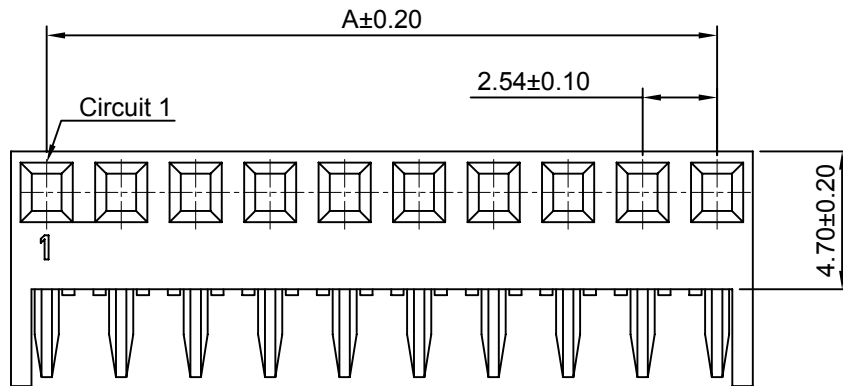


SPECIFICATIONS:

Current Rating: 2.5A AC,DC
 Voltage Rating: 250V AC,DC
 Temperature Range: -40°C ~ +105°C
 Contact Resistance: 20mΩ Max.
 Insulation Resistance: 100MΩ Min.
 Withstanding Voltage: 500V AC/minute
 Material: Nylon 66,UL94V-0(Natural)

Ordering Information & Dimensions

Circuits	Dimensions(mm)		Circuits	Dimensions(mm)	
	A	B		A	B
2P	2.54	4.98	10P	22.86	25.30
3P	5.08	7.52	11P	25.40	27.84
4P	7.62	10.06	12P	27.94	30.38
5P	10.16	12.60	13P	30.48	32.92
6P	12.70	15.14	14P	33.02	35.46
7P	15.24	17.68	15P	35.56	38.00
8P	17.78	20.22	16P	45.72	48.16
9P	20.32	22.76			



Beijing Hongli Kungpeng International Trade Co., Ltd.

Unit mm	Scale 4:1	Sheet 1 of 1
Draw BY: Jack Yin	Approved : GONGYB	

Title :
2.54mm PITCH BOTTOM ENTRY HOUSING

General Tolerance	
x.x≤0.25	ANGLE±
x.xx≤0.20	
x.xxx≤0.15	

DRAW NO : HLB-41-AW-XP 1 ^{REV}_{A0}

A0	NEW RELEEASE	2010.06.10
REV	DESCRIPTION	DATE