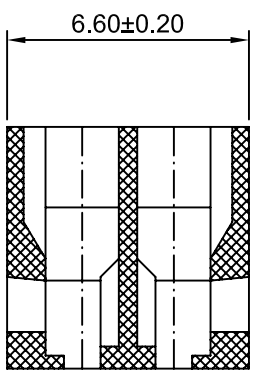
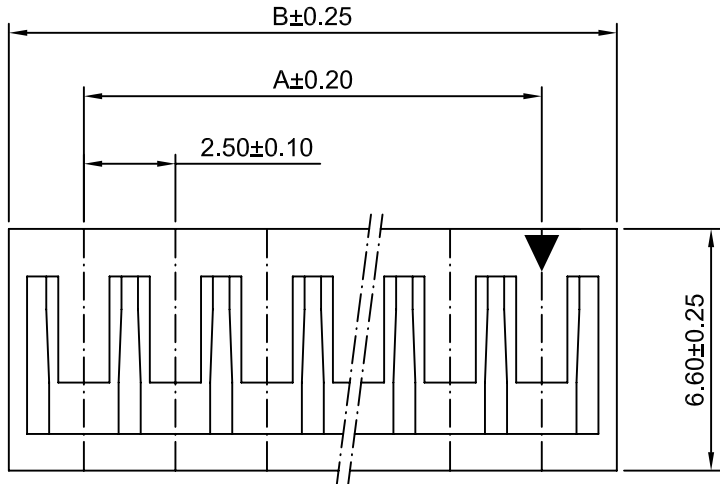


SPECIFICATIONS:
 Current Rating: 3A AC,DC
 Voltage Rating: 250V AC,DC
 Temperature Range: -40°C ~ +105°C
 Contact Resistance: 10mΩ Max
 Insulation Resistance: 1000MΩ Min
 Withstanding Voltage: 1000V AC/minute
 Material: Nylon 66,UL94V-0 (White)

Ordering Information & Dimensions

Circuits	Dimensions(mm)		Circuits	Dimensions(mm)	
	A	B		A	B
2x2P	2.50	6.70	2x10P	22.50	26.70
2x3P	5.00	9.20	2x11P	25.00	29.20
2x4P	7.50	11.70	2x12P	27.50	31.70
2x5P	10.00	14.20	2x13P	30.00	34.20
2x6P	12.50	16.70	2x14P	32.50	36.70
2x7P	15.00	19.20	2x15P	35.00	39.20
2x8P	17.50	21.70	2x16P	37.50	41.70
2x9P	20.00	24.20			



Beijing Hongli Kunpeng International Trade Co., Ltd.

Unit mm	Scale 5:1	Sheet 1 of 1
Draw BY: LIZQ	Approved : GONGYB	

Title :
2.50mm PITCH
DUAL ROW HOUSING
 DRAW NO : HLB-12-H-2xXP 1

General Tolerance			ANGLE±	
A0	NEW RELEASE	2016.06.13	x.x≤0.25	
REV	DESCRIPTION	DATE	x.xx≤0.20	
			x.xxx≤0.15	

REV
A0