

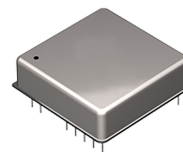


## Features

- High synchronization accuracy
- Strong retention
- High temperature stability
- High frequency accuracy
- Short stability is strong

## Applications

- Wired communication
- Wireless communication
- Power private network
- Industrial control
- Instrumentation



## Standard Specifications

Parameter	Clock Module HM55
Synchronization accuracy(ns)	±30
Retention capacity	±1.5µs/ 24 hours ( T=±15°C)
Temperature stability (ppb)	±0.1
Phase noise (dBc/Hz@1K)	-155
Operating temperature (°C)	-40°C ~ 85°C
Dimension (mm)	51.0*51.0*13.0
Description	Built-in OCXO, ultra-high precision

## Other

- This clock module series is a highly integrated clock module product that integrates clock and compensation algorithm. Reference the external clock source, tame the local clock, quickly achieve frequency and phase synchronization calibration, enter the hold mode after the reference source is lost.
- Supports NTP Server and Client configurations
- Supports PTP GM, Slave, and BC configurations
- Meet the IEEE1588V2 specifications
- Support SyncE+PTP