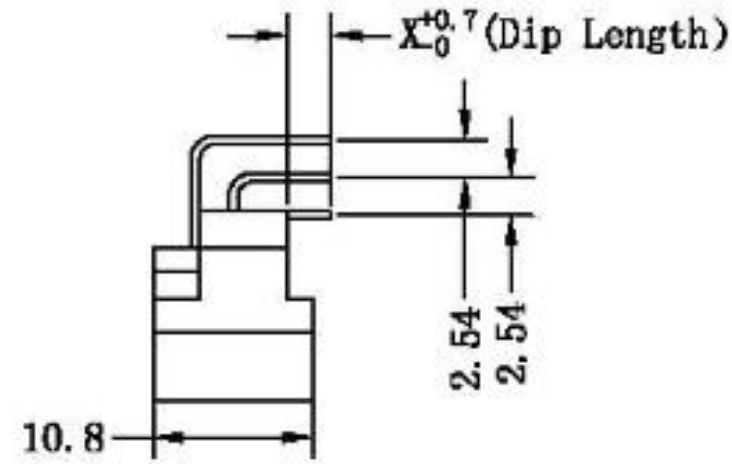
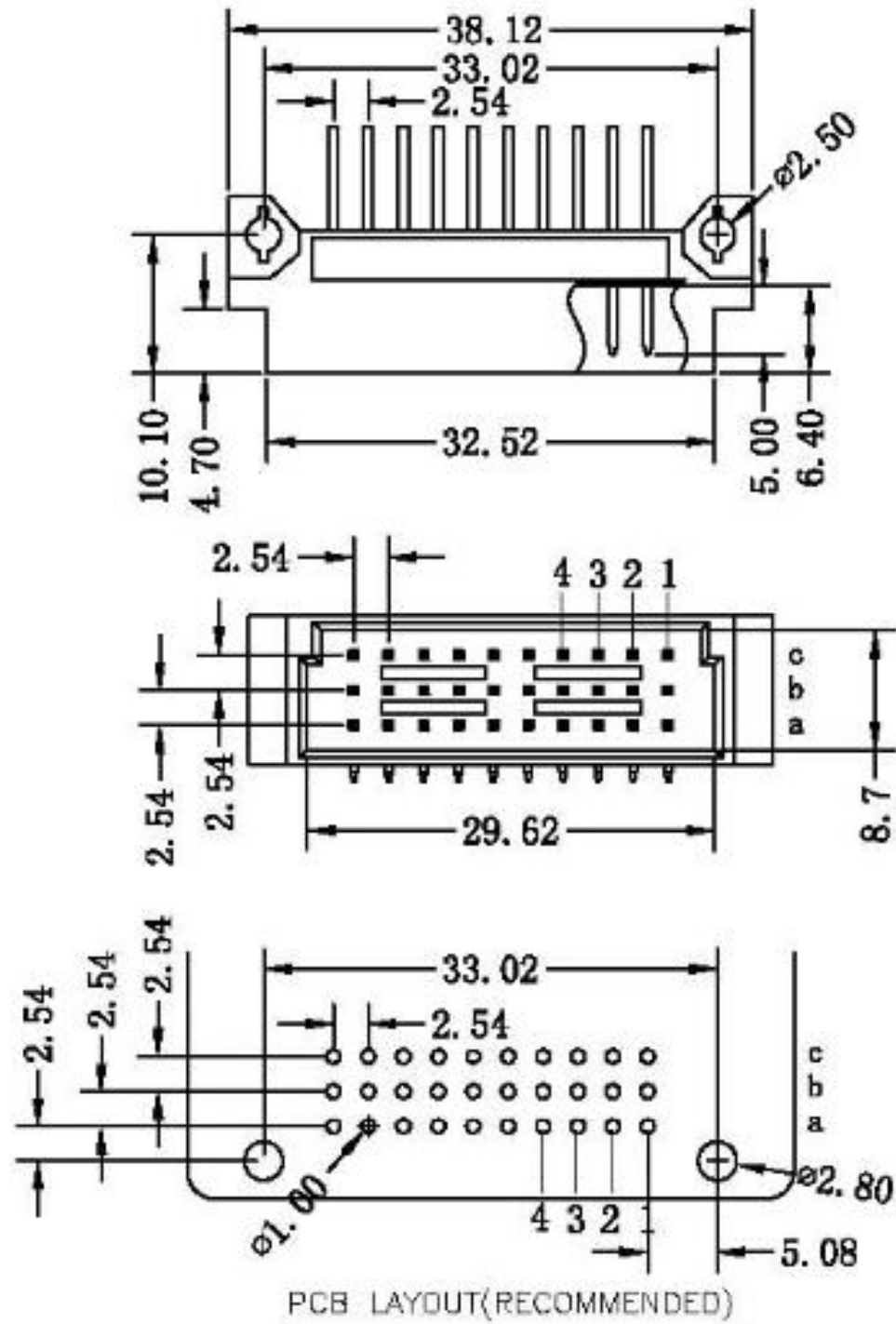


HLAL Series

DIN41612 C Type Male

Drawing NO. : DIN080

UNIT:mm



MATERIAL:

Contacts: Brass
Housing: PBT UL 94V-0

ELECTRICAL CHARACTERISTICS:

Current Rating: 2 A
Dielectric Withstanding Voltage: AC 1000V
Insulator Resistance: 1000 M Ω min
Contact Resistance: 30 m Ω max
Operating Temperature: -55° C ~ +105° C

Pitch	Position	Rows with Contacts	Length	
			1 3.0	2 4.0
2.54mm	30	a b c		
	20	a b -		
	20	a - c		
	10	a - -		
5.08mm	15	a b c		
	10	a b -		
	10	a - c		
	5	a - -		

ORDERING INFORMATION

Series N.O	Pitch(mm)	Contact Type	Position	Contact length(mm)	Contact Plating	Glod Plating	Dip Type
HLAL-	*	1	*	*	*	*	D
DIN41612 C Type	1: 2.54 2: 5.08	1:Male	30 20 15 10 5	1: 3.0 2: 4.0	C: Dip Tin Contact Gold G: Glod	00: G/F 02: 2u" 03: 3u" 05: 5u" 10: 10u" 15:15u" 30: 30u"	Blank: Dip

Tel: 86-10- 57891098 MP :86-13001179378 or 13146881693

Mail: info@hlpint. com or lucyliu0807 @163.com